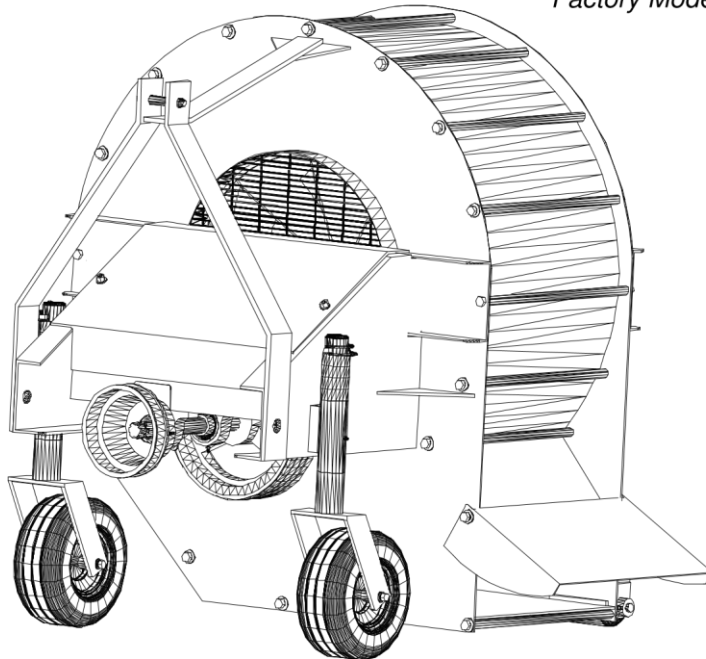


Parts Manual

Rear Mounted TM300, TM360 & TM360XL

Tornado Blowers

Factory Model Numbers T111 to T113



This Parts Manual has been produced for the reordering of spare parts, whether they are components or sub-assemblies. In some instances a component may not be available as a single item, but will be available as a sub-assembly. For example, a 'Sleeve' may be fitted with a 'Bearing Bush' because the end user will not have the equipment to fit the two parts together without causing damage to them.

This Manual consists of numerous diagrams, each detailing a 'section' of the product e.g. the drive system, suspension, pulleys etc. Each diagram has a bubble reference for each individual component, which is cross referenced in the adjacent table to a Part Number. To obtain spare parts, contact our Parts Department, with the part number of the item you require, together with the quantity you need, and an order number (where possible). Alternatively you can place an order using a credit card. Assuming the parts are in stock, we should be able to despatch the goods on the same day.



Parts Manual for the Tornado Blowers

Manufactured with pride by:

**Groundmech Machinery Ltd
Technology House
Church Road
Shottermill
Haslemere, Surrey, GU27 1NU
United Kingdom**

Telephone: 01372 468341

(International dialing code: + 44 1372 468341)

E-mail: groundmech@surreypower.co.uk Web site: www.groundmech.com

SUPPLIED BY:



INDEX

PAGE	
5	Parts Lists –TM360 & TM360XL
5	Castor Leg
7	Roller Assembly
8	Tension Tray
10	Main Body (Preliminary)
12	Main Body
14	Decals
23	Packaging
24	PTO shaft parts list

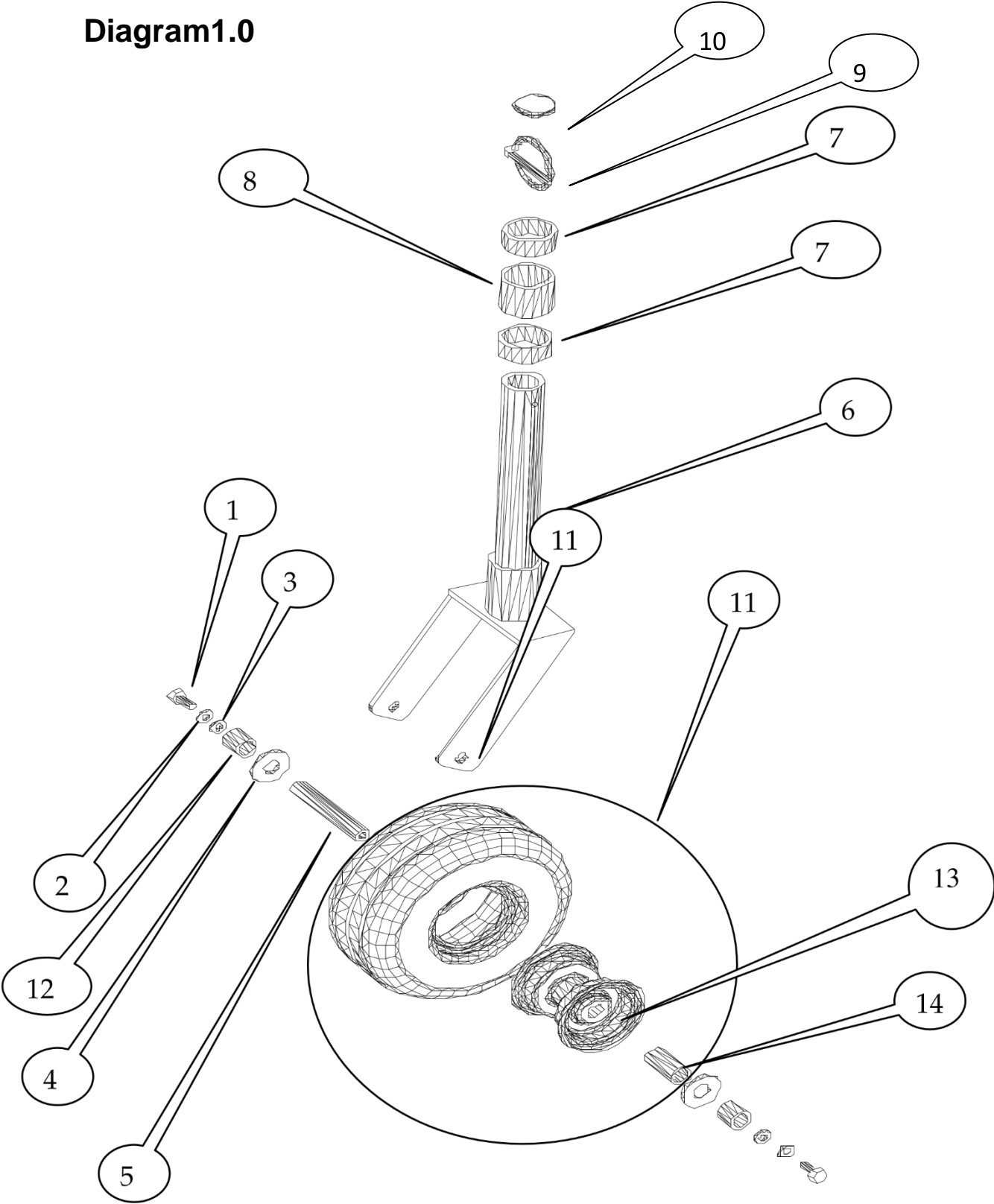
Sub-assemblies

Castor Leg Assembly

Parts Needed

Part Description	Part No	Quantity
1/. M12 X 25 SET SCREW	FG1274	4
2/. M12 FORM A PLAIN WASHER	FG1204	4
3/. M12 FORM A SPRING WASHER	FG1214	4
4/. M24 PLAIN WASHER	TB1087	4
5/. CASTOR AXLE	TB1004	2
6/. CASTOR	TB1015	2
7/. 25MM SPACER	TB1098	4
8/. 50MM SPACER	TB1099	2
9/. LYNCH PIN	TB1123	2
10/. BLACK PLASTIC BUNG	TB1116	2
11/. WHEEL + TYRE ASM	TB1108	2
12/. AXLE SPACER	TB1097	2
13/. GREASE NIPPLE	TB1328	2
14/. WHEEL BEARING	TB1089	2

Diagram1.0

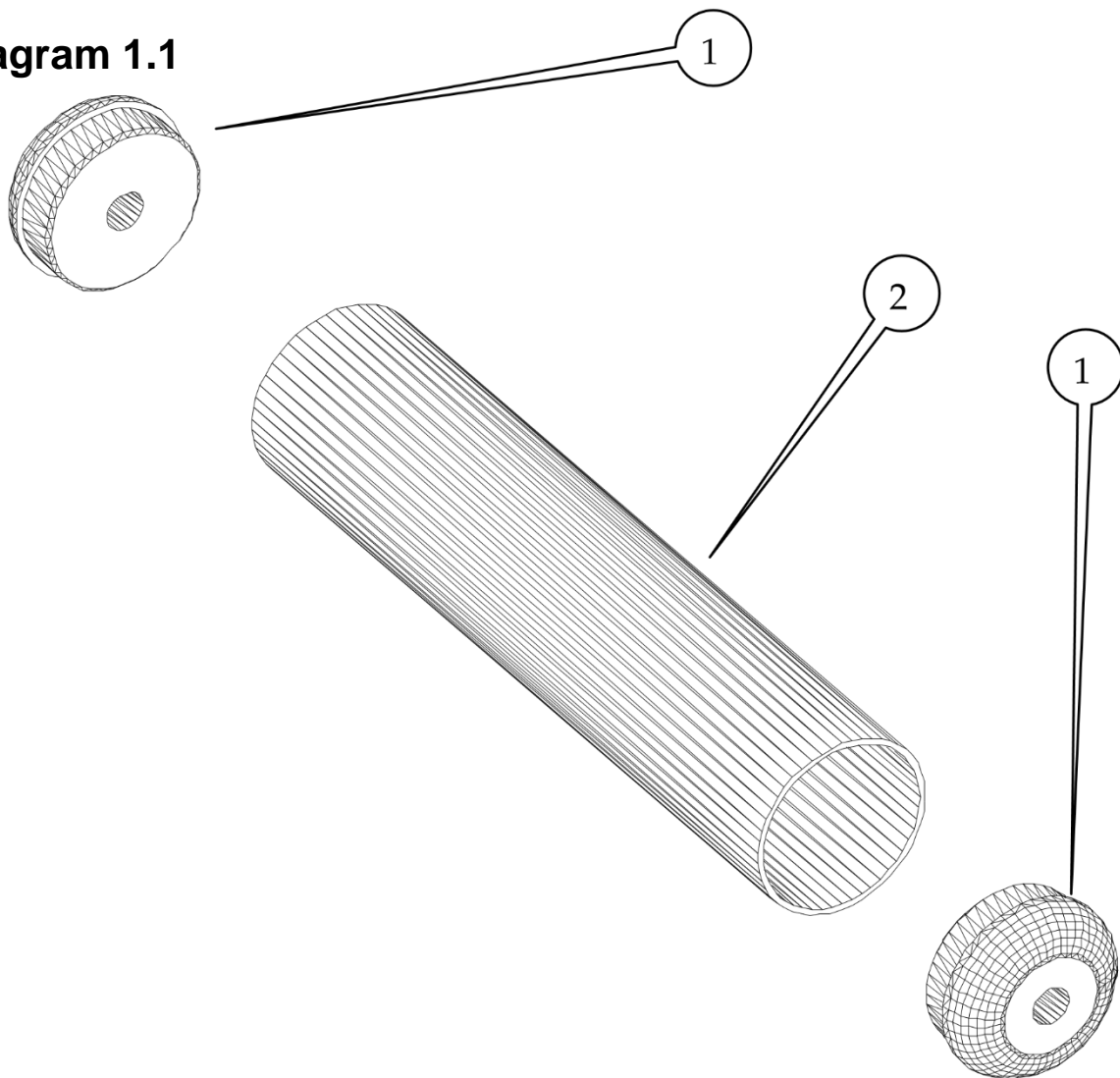


Roller Assembly

Parts Needed

Part Description	TM300		TM360/XL	
	Part No	QTY	Part No	QTY
1/. ROLLER END CAP	TB1086	2	TB1086	2
2/. REAR ROLLER	TB1084	1	TB1085	1

Diagram 1.1

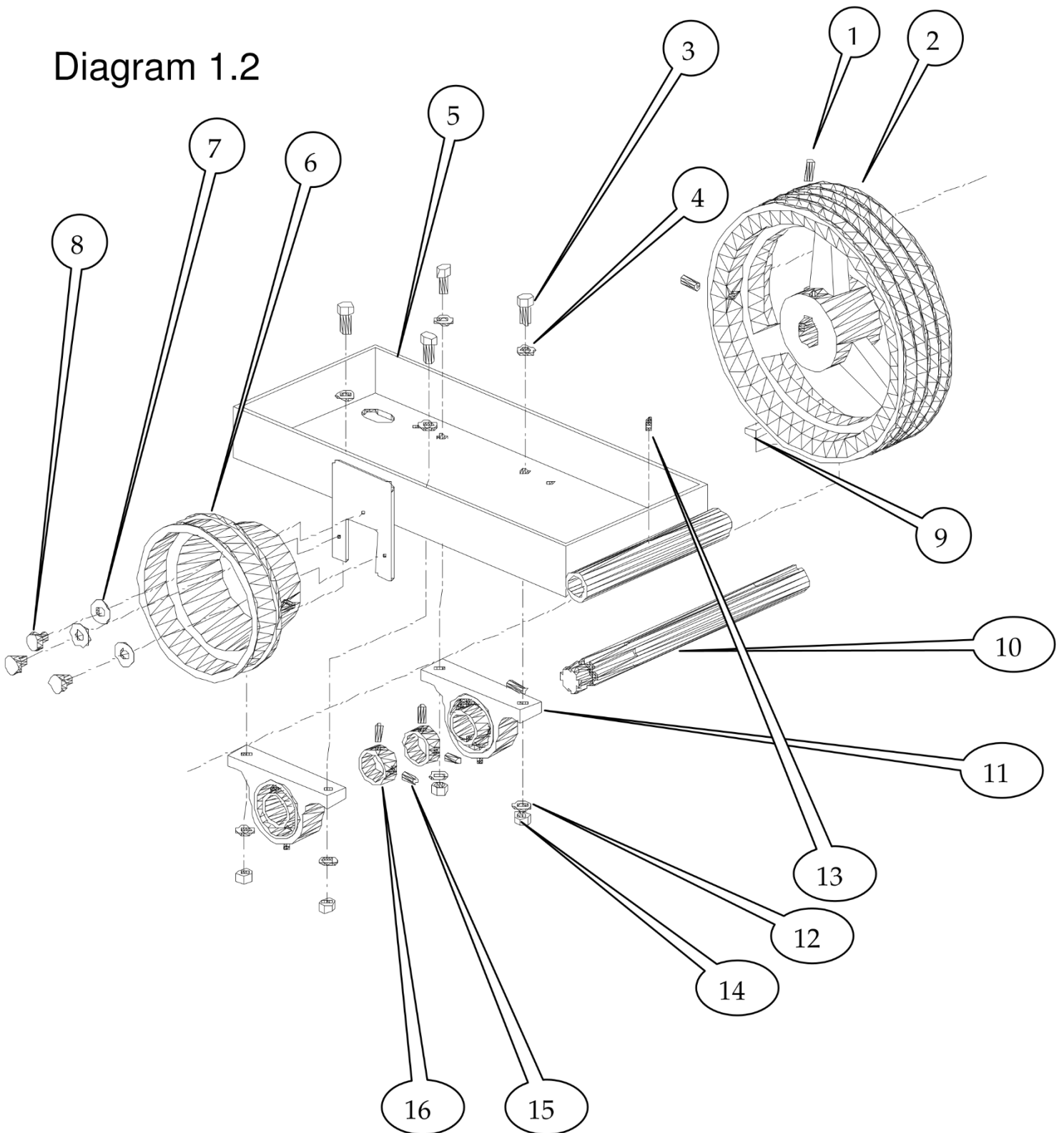


Tension Tray

Part Description	TM300		TM360/XL	
	Part No.	QTY	Part No.	QTY
1/. Grub Screw	FG1299	2	FG1299	2
2/. Drive Pulley	TB1075	1	TB1077	1
3/. Set Screw	FG1277	4	FG1277	4
4/. Plain Washer	FG1204	4	FG1204	4
5/. Tension Tray	TB1104	1	TB1105	1
6/. Guard	SA1008	1	SA1008	1
7/. Plain Washer	FG1202	3	FG1202	3
8/. Self-Tapping Screw	FG1439	3	FG1439	3
9/. Drive Key	TB1050	1	TB1050	1
10/. Input Shaft	TB1002	1	TB1003	1
11/. Tension Tray Bearing	TB1092	2	TB1094	2
12/. Plain Washer	FG1204	4	FG1204	4
13/. Grease Nipple	FG1328	4	FG1328	4
14/. Nylock Nut	FG1234	4	FG1234	4
15/. Grub Screw	FG1315	4	FG1315	4
16/. Locking Collar	TB1124	2	TB1124	2

Parts Needed

Diagram 1.2





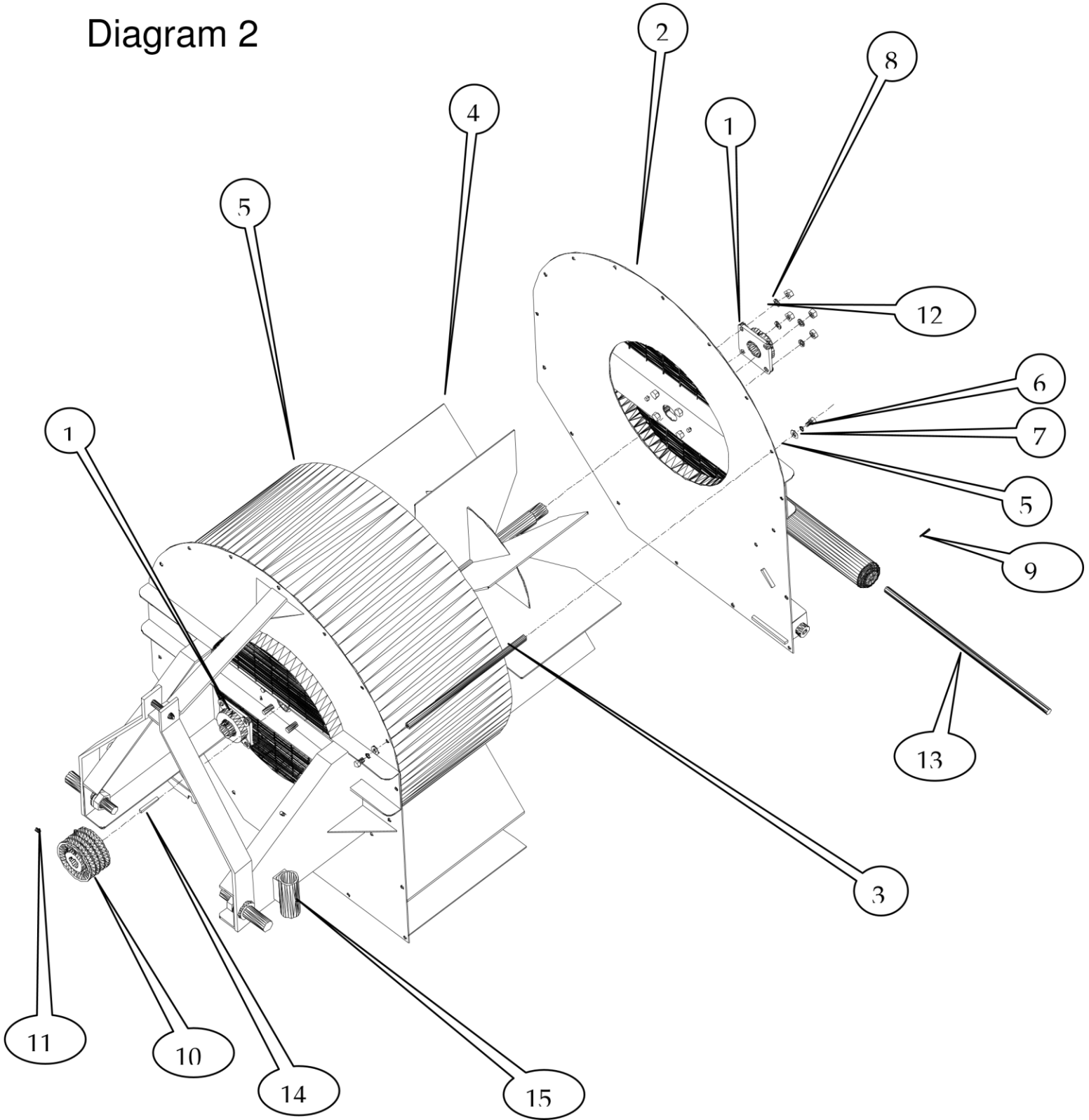
Main Assembly

Main Body (Preliminary)

Parts needed

Part description	TM300		TM360		TM360XL	
	Part No.	Qty	Part No.	Qty	Part No.	Qty
1/. Impeller bearing	TB1093	2	TB1091	2	TB1091	2
2/. Back plate	TB1070	1	TB1071	1	TB1071	1
3/. Housing fastener	TB1009	18	TB1010	18	TB1114	18
4/. Impeller	TB1045	1	TB1113	1	TB1117	1
5/. Plain washer	FG1204	36	FG1204	36	FG1204	36
6/. Set screw	FG1274	36	FG1274	36	FG1274	36
7/. Spring washer	FG1214	36	FG1214	36	FG1214	36
8/. Nylock Nut	FG1236	8	FG1236	8	FG1236	8
9/. Roll pin	TB1096	1	TB1096	1	TB1096	1
10/. Driven Pulley	TB1074	1	TB1076	1	TB1076	1
11/. Grub Screw	FG1299	2	FG1299	2	FG1299	2
12/. Plain Washer	FG1205	8	FG1205	8	FG1205	8
13/. Roller Shaft	TB1063	1	TB1064	1	TB1064	1
14/. Drive Key	TB1051	1	TB1051	1	TB1051	1
15/. Grease Nipple	FG1328	2	FG1328	2	FG1328	2

Diagram 2



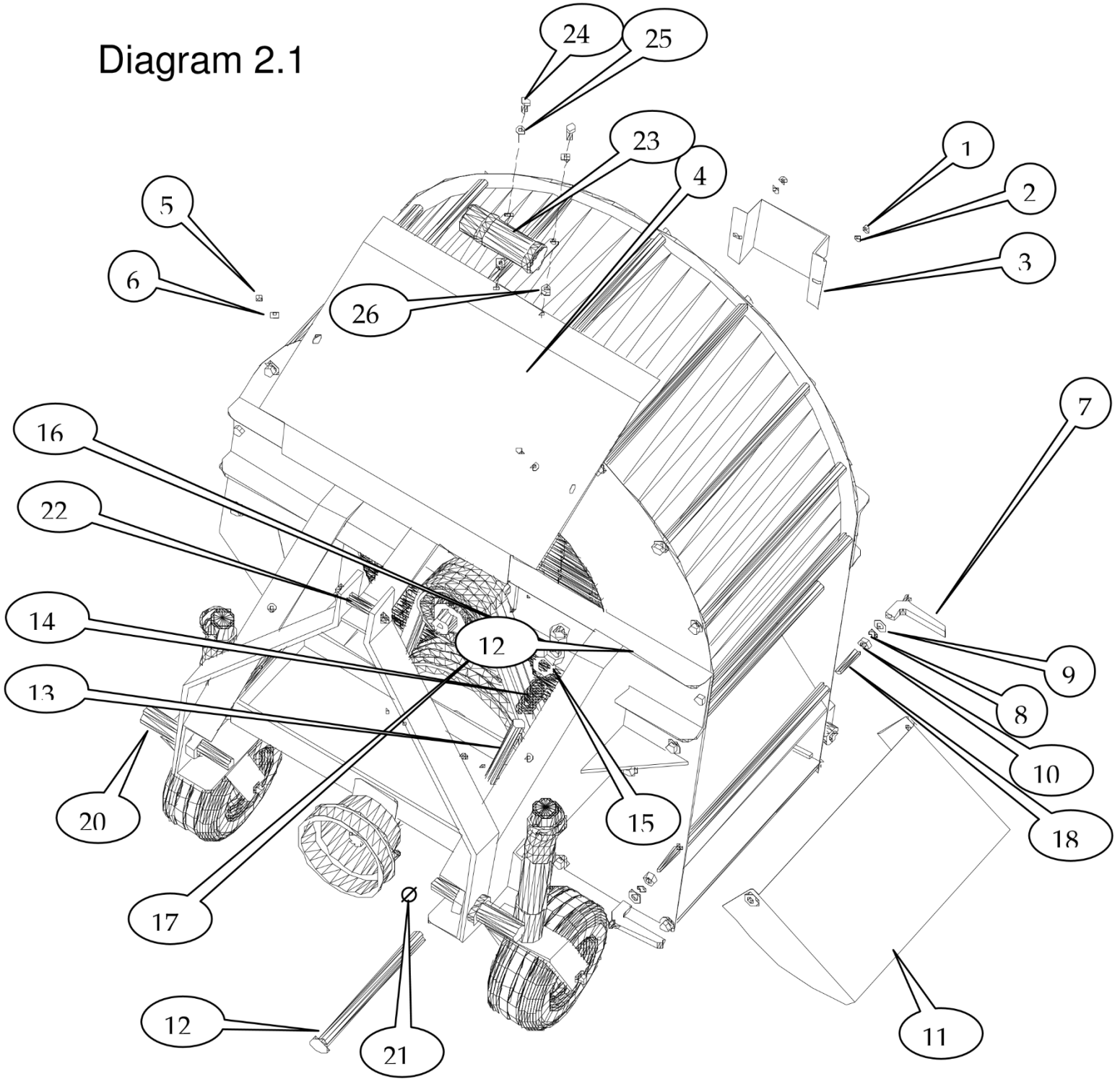
Main Assembly Main Body

Parts needed

Part description	TM300		TM360		TM360XL	
	Part no.	QTY	Part No.	QTY	Part No.	QTY
1/. Nylock Nut	FG1232	2	FG1232	2	FG1232	2
2/. Plain Washer	FG1202	2	FG1202	2	FG1202	2
3/. Rear Bearing Guard	TB1035	1	TB1038	1	TB1038	1
4/. Top Guard	TB1036	1	TB1037	1	TB1037	2
5/. Setscrew	FG1254	2	FG1254	2	FG1254	1
6/. Plain Washer	FG1202	1	FG1202	1	FG1202	1
7/. Locking handle	TB1126	2	TB1126	2	TB1126	2
8/. Anti Vibe Washer	TB1088	4	TB1088	4	TB1088	4
9/. Plain Washer	FG1204	2	FG1204	2	FG1204	2
10/. Plain Nut	FG1224	2	FG1224	2	FG1224	2
11/. Blast Intensifier	TB1032	1	TB1033	1	TB1134	1
12/. Tension Tray Pin	TB1061	1	TB1065	1	TB1065	1
13/. T-bar	TB1101	1	TB1102	1	TB1102	1
14/. Tensioner Spring	TB1080	1	TB1079	1	TB1079	1
15/. Plain Washer	TB1087	2	TB1087	2	TB1087	2
16/. Plain Nut	TB1053	2	TB1053	2	TB1053	2
17/. Drive Belt	VB1003	4	VB1038	4	VB1038	4
18/. Stud	TB1100	2	TB1100	2	TB1100	2
19/. Grub screw	FG1315	1	FG1315	1	FG1315	1
20/. Lower Link Pins	TB1066	2	TB1067	2	TB1067	2
21/. Lynch Pins	TB1340	3	TB1340	3	TB1340	3
22/. Top Link Pin	FG1343	1	FG1343	1	FG1343	1
23/. Operator's manual	TB2054	2	TB2054	2	TB2054	2
24/. Set pin	FG1262	2	FG1262	2	FG1262	2
25/. Washer	FG1203	1	FG1203	1	FG1203	1
26/. Nylock	FG1233	2	FG1233	2	FG1233	2

Decal Location

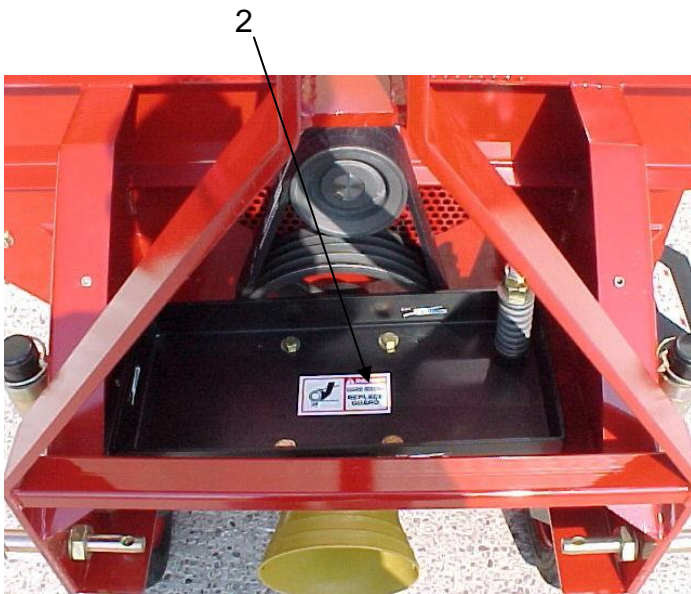
Diagram 2.1





No	Decal Part Numbers		
	TM 300	TM360	TM360XL
1	DL1019	DL1019	DL1019
2	DL1018	DL1018	DL1018

Front View (Top Guard Removed)

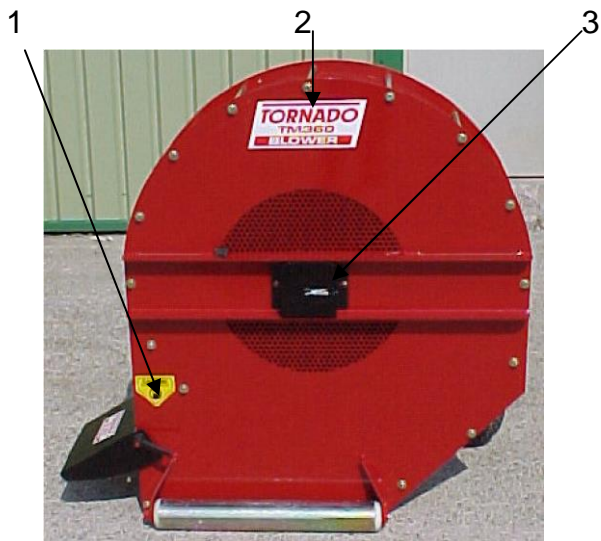


Front View (Top cover in place)



Decal Part Numbers			
No			
1	TM 300	TM360	TM360XL
2	DL1004	DL1005	DL1007
3	DL1020	DL1020	DL1020
4	DL1021	DL1021	DL1021
5	DL1028	DL1028	DL1028
6	DL1015 DL1009	DL1015 DL1009	DL1015 DL1009

Rear View



Decal Part Numbers			
No			
1	TM 300	TM360	TM360XL
2	DL1078	DL1078	DL1078
3	DL1004 DL1019	DL1005 DL1019	DL1007 DL1019

Side View



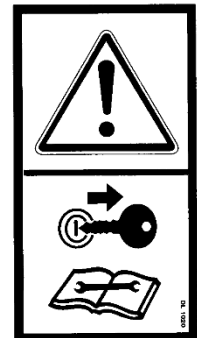
No	Decal Part Numbers		
	TM 300	TM360	TM360XL
	T000499	T000499	T000499
1	T000333	T000333	T000333
2	T002009	T002006	T002004
3	T000498	T000498	T000498
4			

Part Number + Description

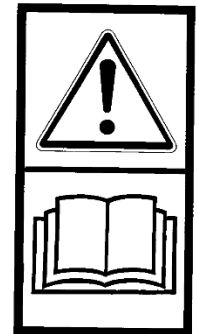
DL1018 Danger Guard Removed x 1



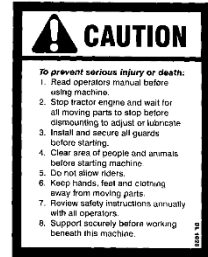
DL1020 Caution Remove Key, Read Manual x 1



DL1021 Caution Read Manual x 1



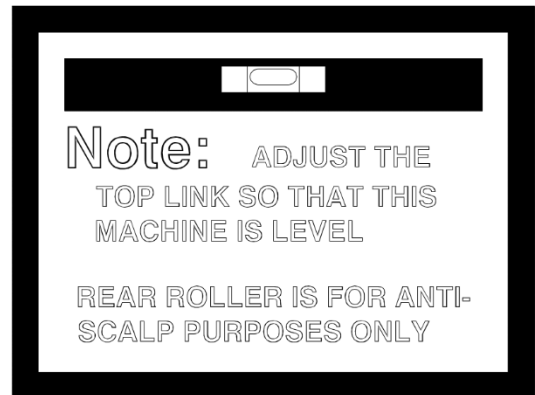
DL1028 Caution Text x 1



DL1019 Grease Point Decal x 6



DL1034 Adjust Top Link to make machine level x 1

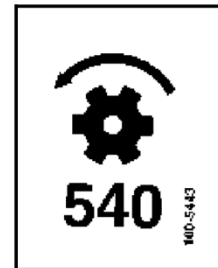


DL1078 Caution Keep Hands and Feet Off x 1



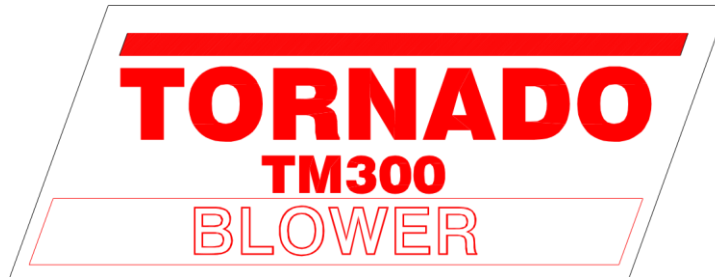
MAXIMUM RPM 540

DL1009 Maximum RPM 540 x 1



DL1004

TM300 Decal Small x 1



DL1003

TM300 Decal Large x 2



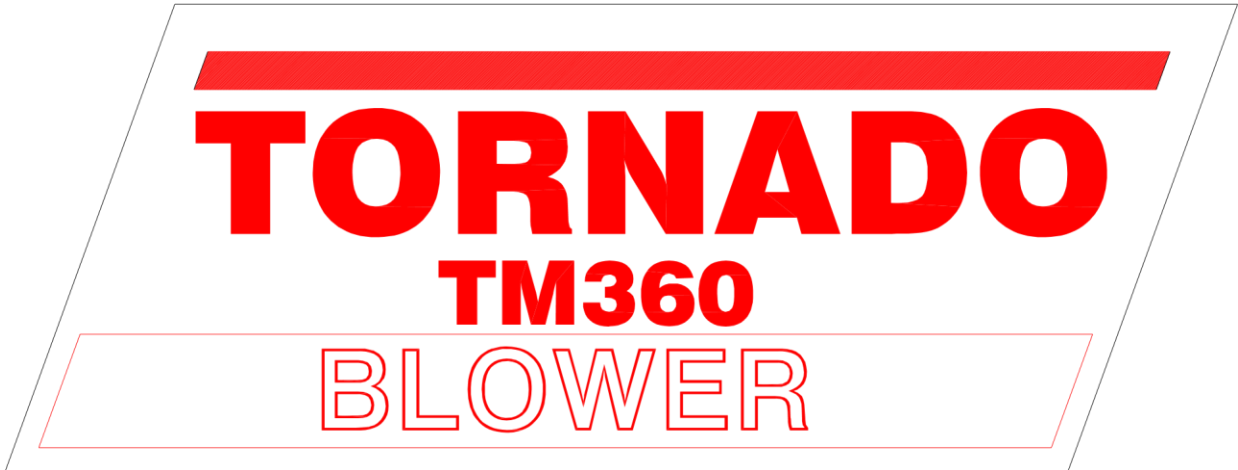
DL1006

TM360 Decal Small x 1



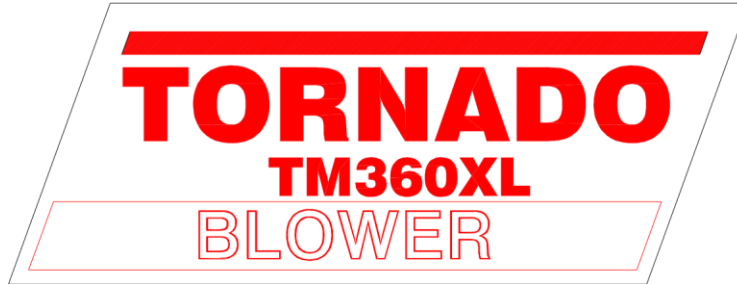
DL1005

TM360 Decal Large x 2



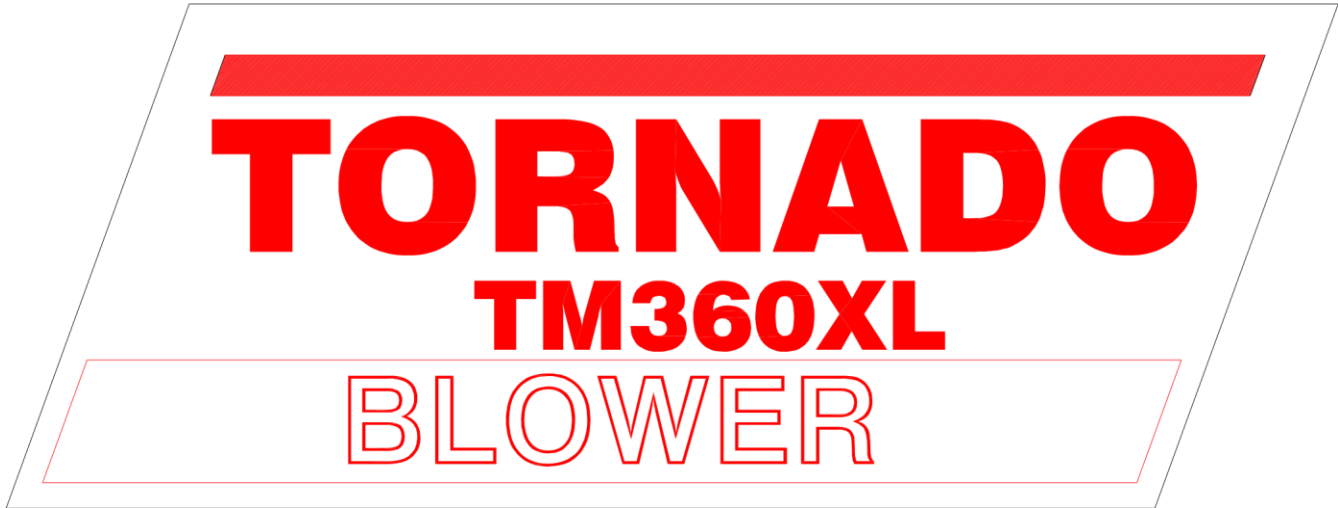
DL1008

TM360XL Decal Small x 1



DL1007

TM360XL Decal Large x 2

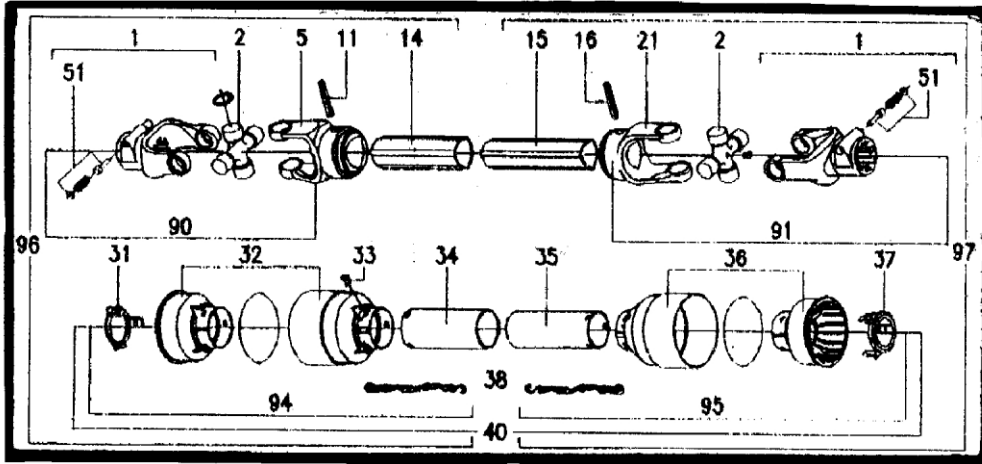


Packaging

Parts Needed

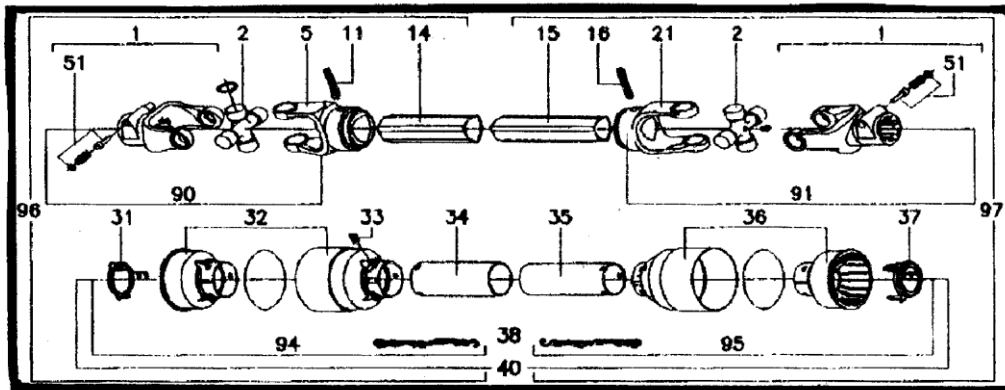
Part Description	Part No			QTY
	TM300	TM360	TM360XL	
Finished Blower				
PTO Shaft	T000584	T000585	T000586	1
Cable Tie	T000598	T000598	T000598	3
PTO Cutting				
Instructions	T002304	T002304	T002304	1
Document Enclosed wallet	T002305	T002305	T002305	1

PTO SHAFT TM 300



POS	Description	QTY	Part No
1	Push pin yoke	2	T002321
2	Cross journal set	2	T002357
5	Outer yoke	1	T002336
11	Roll pin for outer tube	1	T002368
14	Outer tube	1	T002040
15	Inner tube	1	T002343
16	Roll pin for inner tube	1	T002372
21	Inner yoke	1	SA1067
31	Guard retaining collar for outer tube	1	T002356
32	Cone for outer tube	1	T002363
33	Bolt	6	T002370
34	Outer shield	1	T002346
35	Inner shield	1	T002349
36	Cone for inner tube	1	T002362
37	Guard retaining collar for inner tube	1	T002355
31	Safety chains	2	T002361
40	Complete shield with instruction manual	1	TB2019
51	Push pin set 1 3/8"	2	T002351
90	U joint for outer tube	1	T002312
91	U joint for inner tube	1	T002311
94	Half female shield	1	T002327
95	Half male shield	1	T002328
96	Half female shaft with shielding	1	T002318
97	Half male shaft with shielding	1	T002317
100	Instruction manual	1	T002372
101	Complete shaft & shield assembly	1	SA1019

PTO SHAFT TM360 & TM360XL



POS	Description	QTY	Part No
1	Push Pin yoke	2	T002322
2	Cross journal set	2	SA1113
5	Outer yoke	1	T002337
11	Roll pin for outer tube	1	T002369
14	Outer tube	1	T002341
15	Inner tube	1	T002344
16	Roll pin for inner tube	1	T002368
21	Inner yoke	1	T002338
31	Guard retaining collar for outer tube	1	T002359
32	Cone for outer tube	1	T002365
33	Bolt	6	T002370
34	Outer shield	1	T002347
35	Inner shield	1	T002350
36	Cone for inner tube	1	T002364
37	Guard retaining collar for inner tube	1	T002358
38	Safety chains	2	T002361
40	Complete shield with instruction manual	1	SA1111
51	Push pin set 1 3/8"	2	T002351
90	U joint for outer tube	1	T002314
91	U joint for inner tube	1	T002313
94	Half female shield	1	T002330
95	Half male shield	1	T002331
96	Half female shaft with shielding	1	T002370
97	Half male shaft with shielding	1	T002019
100	Instruction manual	1	T002372
101	Complete shaft & shield assembly	1	SA10

Tornado Blower Range - Mk2



The new and improved machines from serial no. 06(300/360/3602)817 onwards have the following changes.

IMPROVEMENTS:

- LARGER ROLLER WITH BEARINGS
- LARGER WHEELS (TM1 REAR WHEELS)
- LARGER TAPERED INLET (VENTURI)
- NEW COLOURS
- NEW DECALS
- NEW LOWER SAFETY GUARD

See following page for images and spare part numbers



Grease point changes.

- Please note the addition grease points on the roller bearings.
- To grease the front impellor bearings the mesh panel (red) can be removed with a 13mm spanner.



Additional Parts

Front blower plate (T210070) x1 QTY PER MACHINE

Decal Turfmech (T210900) x1

Mesh panel (T210110) x1

+M8 washer & Nylock nut x6

Decal – 360XL/360 (T210903/T210902)

Decal – Tornado (T210901) x1

Roller ASM (T210060) x1

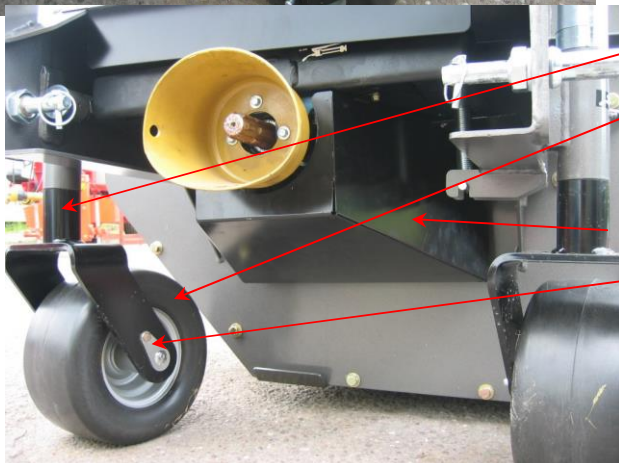
Roller bearing (T198635) x2

+M10x35 Setscrew x4, M10 flat washer x8, M10 Nylock x4

Blast intensifier 360XL/360 (T210120/T210130) x1



Decal – 360XL/360 (T210903/T210902) x2



Castor ASM (T210090) x2

Wheel & Tyre ASM (T198508) x2

Lower guard (T210067) x1 +M8x20 Setscrew, flat & spring washer x4

Rear axle ASM (T198230) x2 +M6x20 setscrew, washers & nylock x2