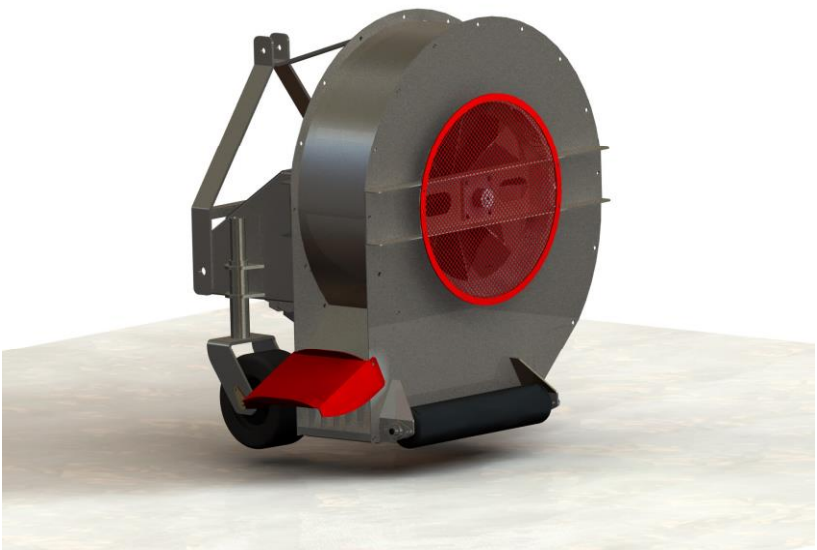




Groundmech Machinery Ltd  
Technology House, Church Road, Shottermill, Haslemere,  
Surrey, GU27 1DN

## Tornado 360/360XL Blowers

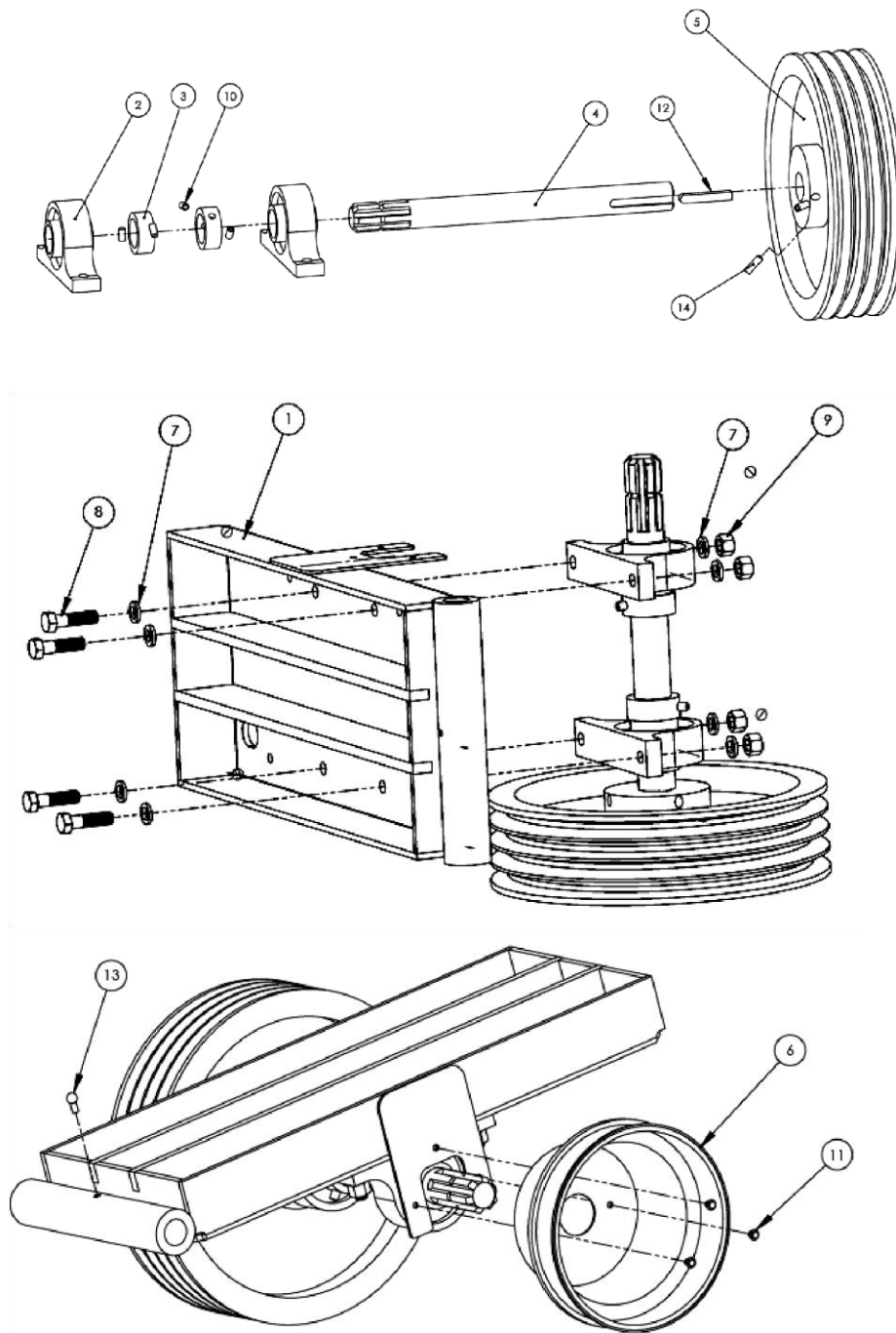


### Parts Manual T217001/T223001

#### Contents

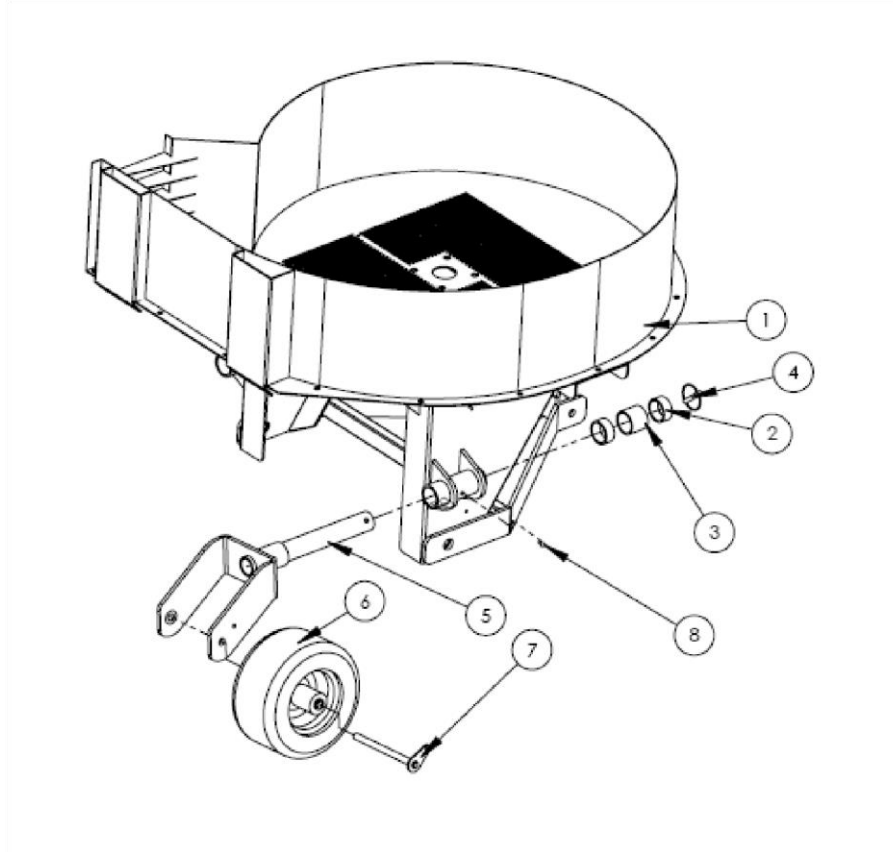
Tension tray .....	2
Castor assembly.....	4
Main body (rear).....	5
Main body (front) .....	8

# Tension tray



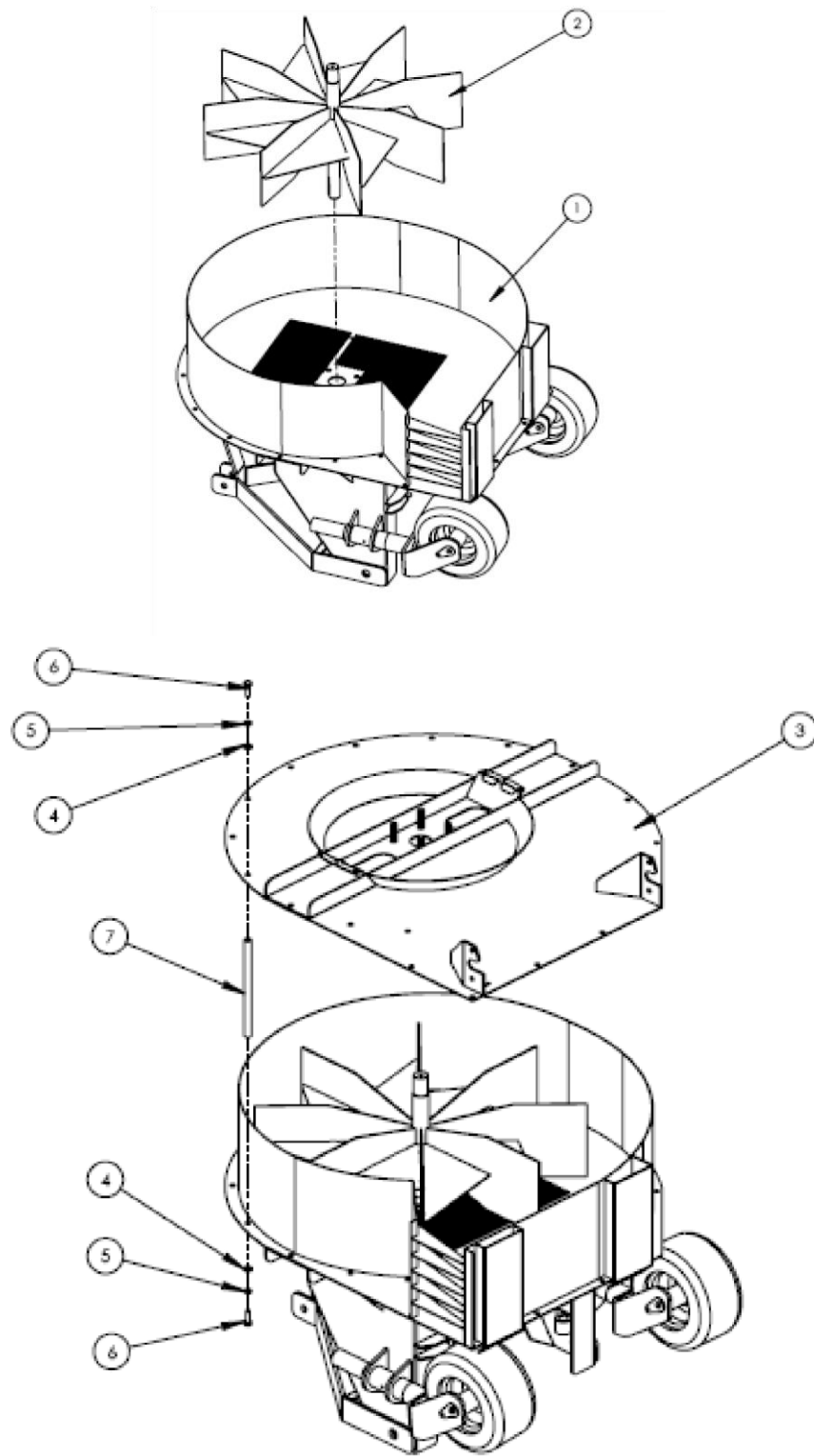
NO.	Part Description	Part number	QTY
1	Tension Tray	T217110	1
2	Pillow Block Bearing	T002293	2
3	Locking Collar	T002298	2
4	PTO shaft	T000220	1
5	Drive Pulley	T002288	1
6	PTO guard	100-5374	1
7	Plain Washer - M12	12PWZY	8
8	Set - M12x45	12-45SSZY	4
9	Nyloc Nut -M12	12NNZY	4
10	Grub Screw - M6x16	10-16KCPGSZC	4
11	Self Tapping Screw	T000588	3
12	Drive Key	T002282	1
13	Grease Nipple	T000481	1
14	Grub Screw - M6x25	10-25KCPGSZc	2

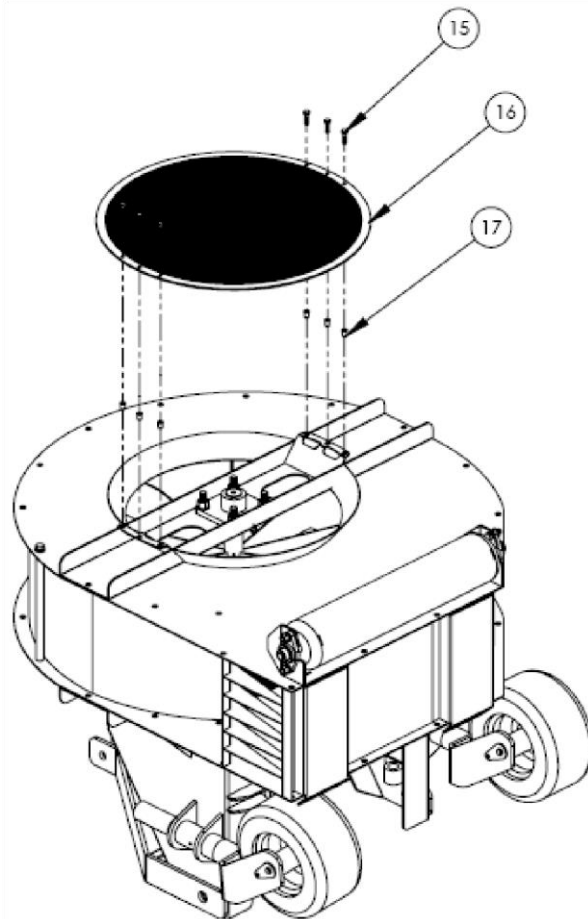
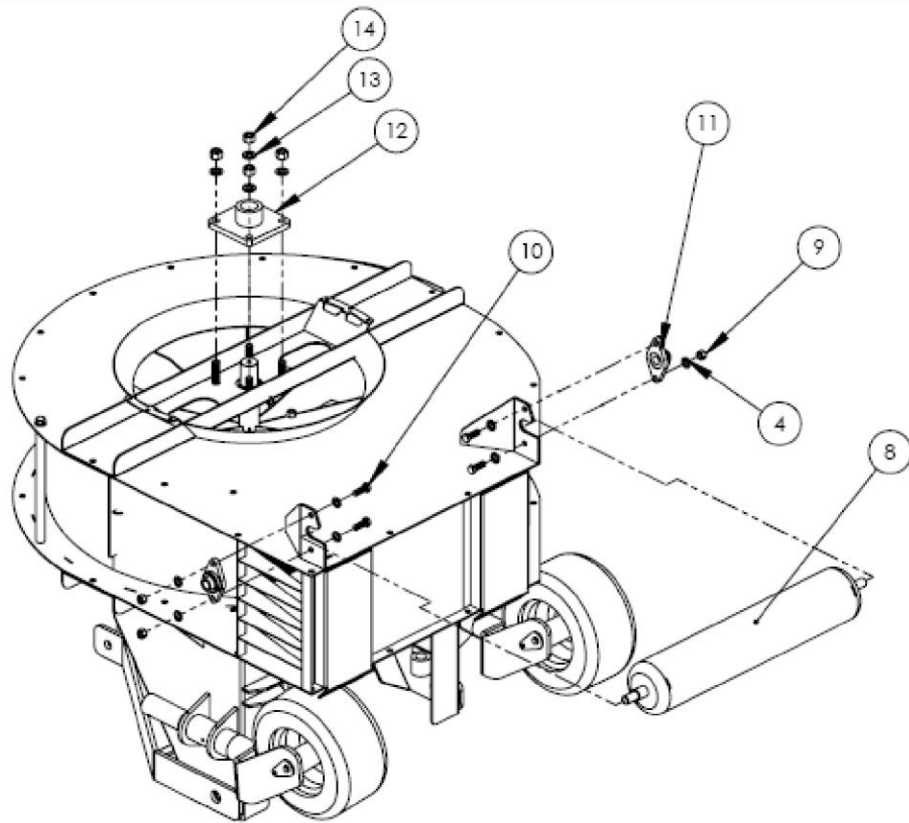
## Castor assembly



NO.	Part Description	Part number		QTY
		360	360XL	
1	Main body	T217050	T223160	1
2	25mm spacer	T217105	T217105	4
3	50mm spacer	T217106	T217106	2
4	Lynch pin	T000077	T000077	2
5	Castor	T217140	T217140	2
6	Wheel - 12x6	T211749	T211749	2
7	Axle	T217150	T217150	2
8	Grease nipple	T000481	T000481	2

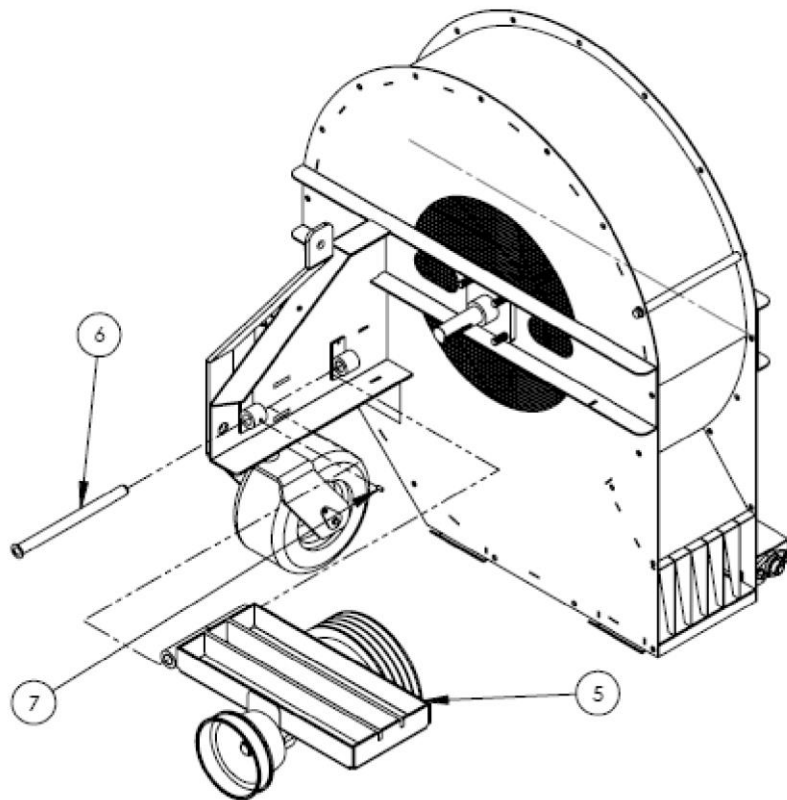
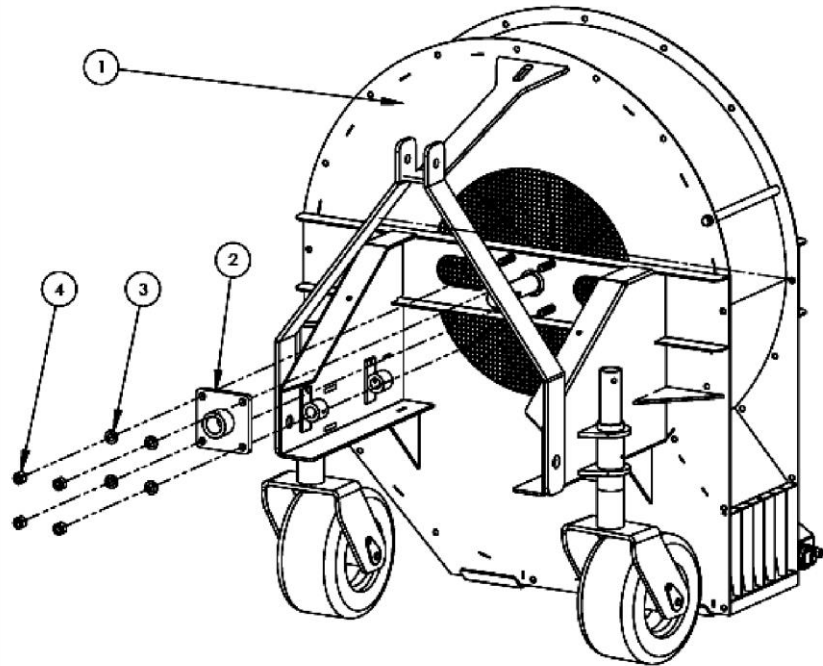
## Main body (rear)



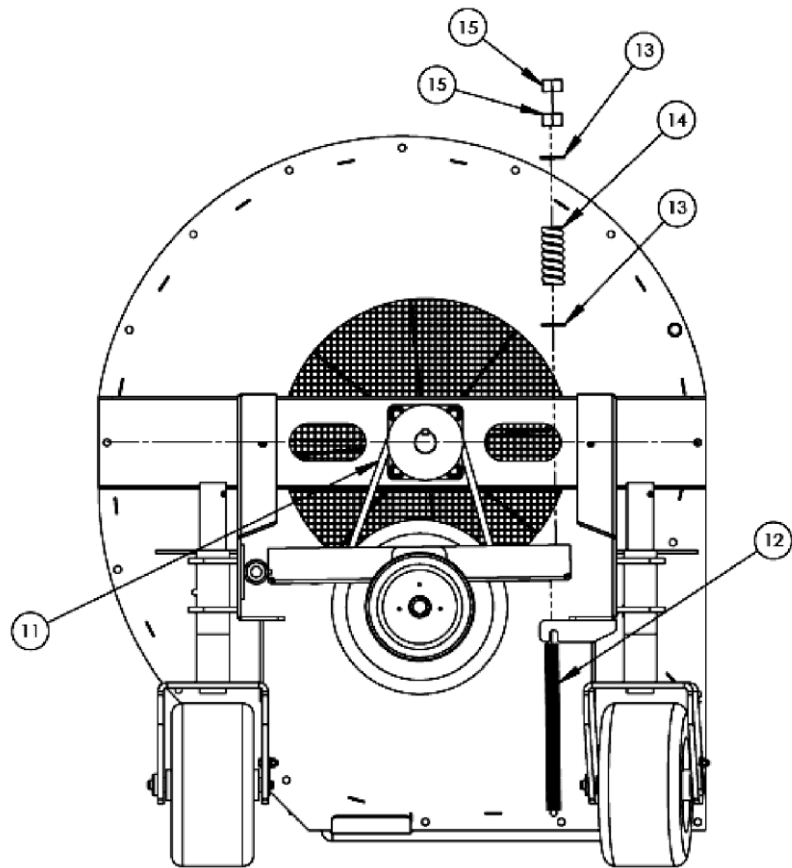
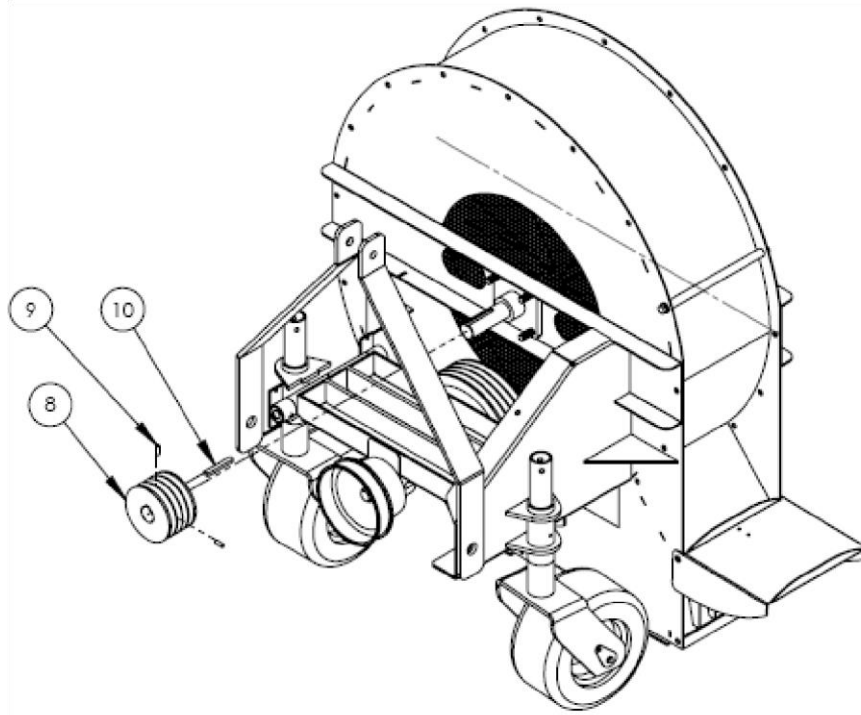


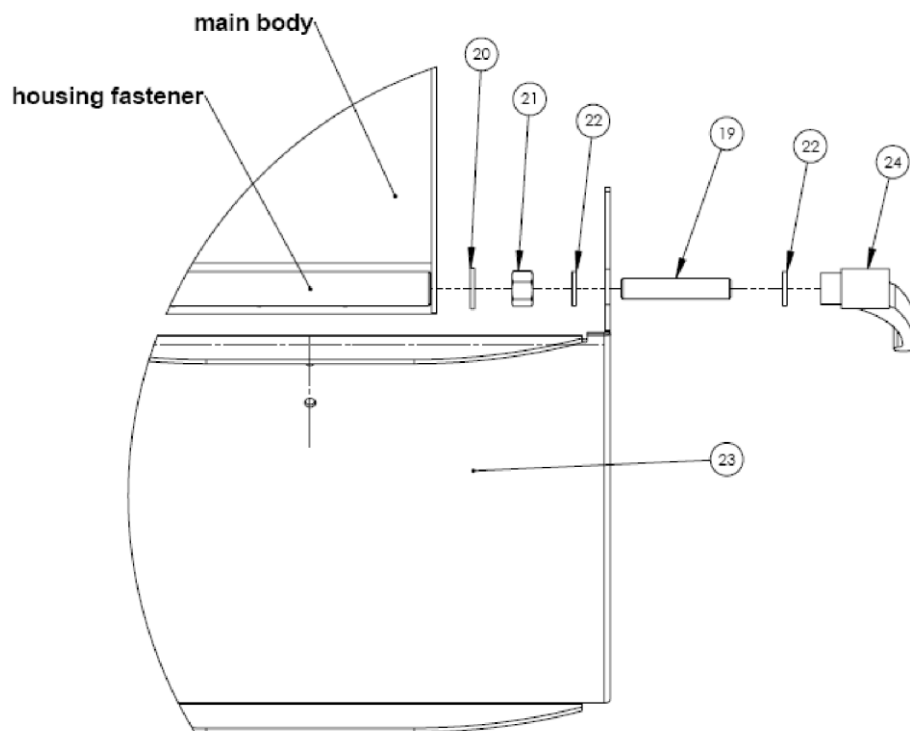
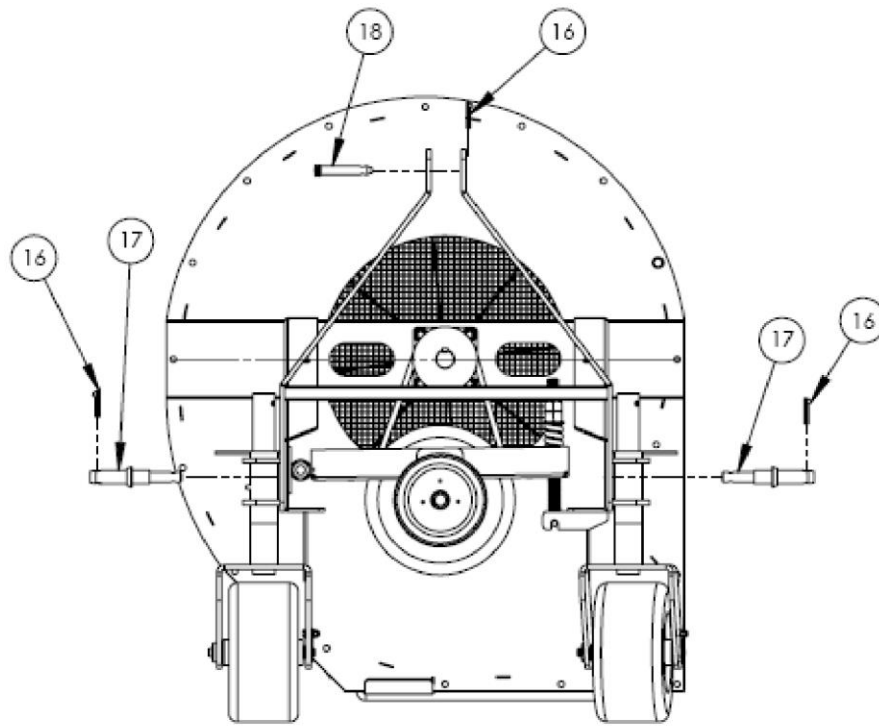
NO.	Part Description	Part number		QTY
		360	360XL	
1	Previous assembly	See page 5	See page 5	1
2	Impeller	T217080	T223170	1
3	Front plate	T217090	T217090	1
4	Plain washer - M12	12PWZY	12PWZY	44
5	Sprung washer - M12	12SWZY	12SWZY	36
6	Set - M12 x 25	12-25SZ	12-25SZ	36
7	Housing fastener	T217093	T223161	18
8	Anti scalp roller	T217130	T217130	1
9	Nyloc nut - M12	12NNZY	12NNZY	4
10	Set - M12 x 35	12-35SZ	12-35SZ	4
11	Bearing - Roller	T198635	T198635	2
12	Bearing - impeller	T002292	T002292	1
13	Plain washer - M16	16PWZY	16PWZY	4
14	Nyloc nut - M16	16NNZY	16NNZY	4
15	Set – M8 x 20	8-20SZ	8-20SZ	6
16	Front guard	T217100	T217100	1
17	M8 nutsert	T006195	T006195	6

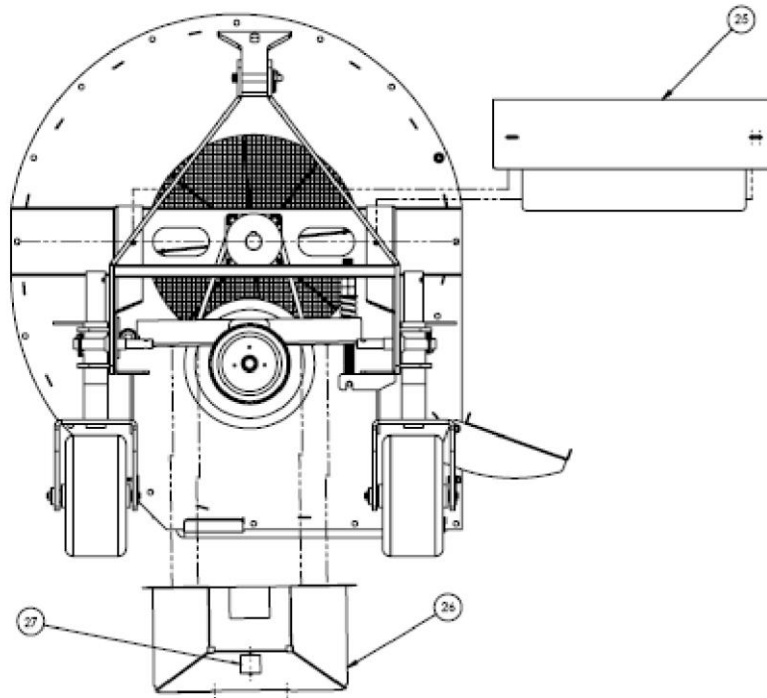
## Main body (front)











NO.	Part Description	Part number	QTY
		360/360XL	
1	Main assembly	See page 7	1
2	Bearing - impeller	T002292	1
3	Plain washer - M16	16PWZY	4
4	Nyloc nut - M16	16NNZY	4
5	Tension tray assembly	See page 3	1
6	Tension tray pin	T217040	1
7	Grub screw - M6x16	10-16KCPGSZC	1
8	Pulley - impeller	T002287	1
9	Grub screw - M6	8-25KCPGSZY	2
10	Key - 8x12	T002259	1
11	V - belt	T002256	4
12	T - bar	T217120	1
13	Plain washer - M24	24PWZY	2
14	Tensioner spring	T002289	1
15	Nut - M24	24PNZY	2
16	Lynch pin	100-5389	3
17	Lower link pin	T002283	2
18	Top link pin	100-5372	1
19	M12 studding	T002213	2
20	Plain washer - M12	12PWZY	2
21	Nut - M12	12PNZY	2
22	Anti vibration washer	12AVWZY	4
23	Blast intensifier	T217111 / T223111	1
24	Locking handle	T002296	2
25	Top guard	T217109	1
26	Lower guard	T217092	1
27	Plate – Bottom guard plate	T217113	1